

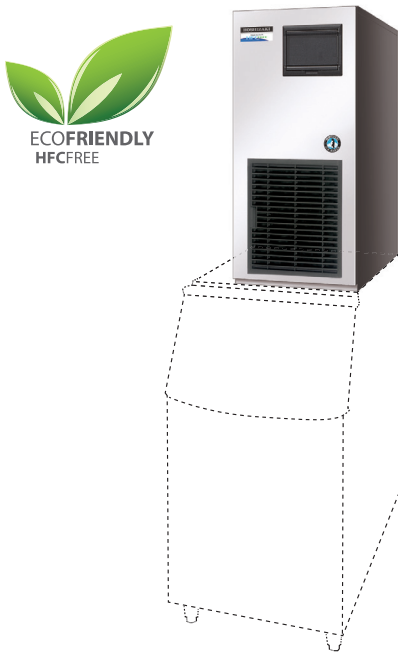


HOSHIZAKI

FM-300AKE-HC (SB) FLAKE ICE MAKER / FM-300AKE-HC-N (SB) NUGGET ICE MAKER

Product Description

The FM-300AKE-HC (-N) is a modular HydroCarbon Ice maker which produces either Flake or Nugget Ice. Flake and Nugget Ice are popular for a variety of cooling purposes, including the display of fish and fresh produce as well as in the medical world for cooling blood and organs. This ice is often used to prepare cocktails and drinks because of the quickness of cooling and limited dilution of drinks.



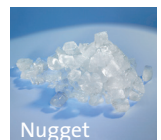
- Hoshizaki ice makers are micro computer controlled, controlling the ice making process to perform at its best under varying circumstances, without having to make physical adjustments.
- The characteristics of the ice produced by Hoshizaki ice makers means that 'freeze-burn' is no longer an issue when displaying fresh fish or produce.
- Quality stainless steel auger and evaporator increase the life expectancy of these components and the whole ice maker, as well as reducing costly maintenance visits.
- An easily cleanable air filter allows end users to carry out a routine cleaning schedule, extending product life expectancy and reducing the frequency and costs of maintenance call-outs.
- Work at low pressure reduces the stress on the system units.
- 100% HFC free CO² foam insulation use contributes to reduction of running costs by maintaining a uniform unit temperature.
- Energy efficiency of ice maker is ensured by the use of extremely low level of the refrigerant R290.

Available Models

FM-300AKE-HC (Air cooled)
FM-300AKE-HC-N (Air cooled)

Ice

Model	Shape
FM-300AKE-HC	Flake
FM-300AKE-HC-N	Nugget



Bins

Model	Type of Bin	Max. Bin Capacity
B-301SA	Modular	144 kg
B-501SA, TK - B5		217 kg
B-801SA, TK - B8		348 kg

Production

Model	Ice Production per 24h	Temperature	Water Consumption per 24h
FM-300AKE-HC	Approx. 300kg Approx. 250kg Approx. 205kg	AT.10°C, WT.10°C AT.21°C, WT.15°C AT.32°C, WT.21°C	Approx. 0,300m ³ Approx. 0,250m ³ Approx. 0,205m ³
FM-300AKE-HC-N	Approx. 250kg Approx. 210kg Approx. 175kg	AT.10°C, WT.10°C AT.21°C, WT.15°C AT.32°C, WT.21°C	Approx. 0,250 m ³ Approx. 0,210 m ³ Approx. 0,175m ³

Two year warranty

For more information visit our website at www.hoshizaki-europe.com
Hoshizaki Europe B.V. retains the right to change products and their specifications without prior notice.

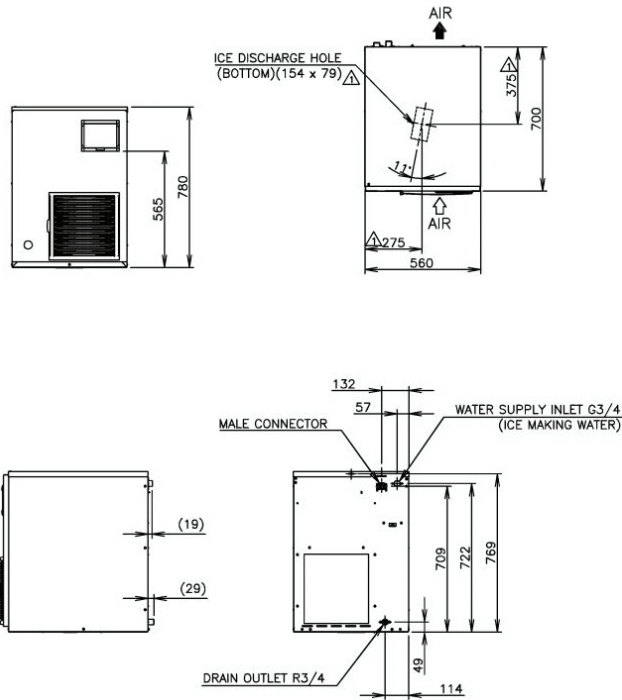




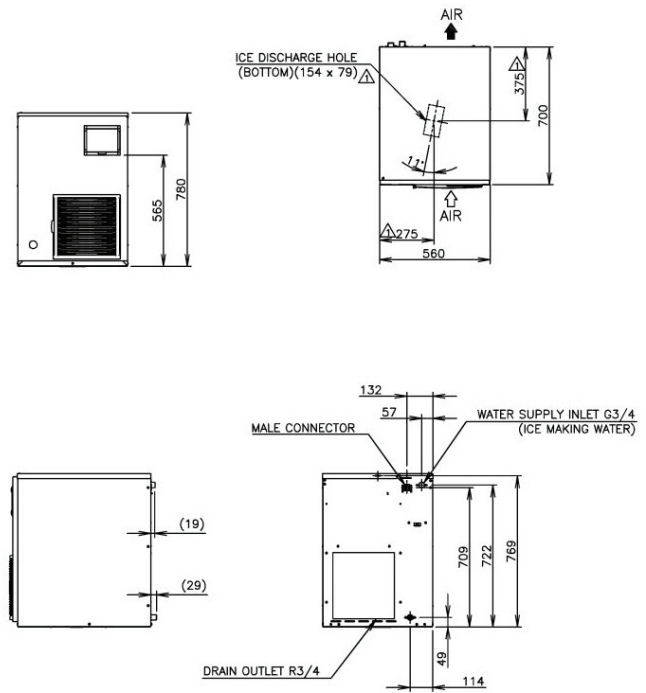
HOSHIZAKI

FM-300AKE-HC (SB) FLAKE ICE MAKER / FM-300AKE-HC-N (SB) NUGGET ICE MAKER

FM-300AKE-HC



FM-300AKE-HC-N



Specification	FM-300AKE-HC	FM-300AKE-HC-N
Power Supply	1 Phase 220V-240V 50Hz Capacity: 1.53kVA (6.4A)	1 Phase 220V-240V 50Hz Capacity: 1.53kVA (6.4A)
Amperage (AT.32°C, WT.21°C)	4.8A Starting: 20A	5.1A Starting: 20A
Electric Consumption	900W (Power Factor: 82.5%)	960W (Power Factor: 84.2%)
Exterior	Stainless Steel, Galvanized Steel (Rear)	Stainless Steel, Galvanized Steel (Rear)
Connections - Water Supply	Direct Connection to Water Main, Inlet: G3/4 (Rear)	Direct Connection to Water Main, Inlet: G3/4 (Rear)
Connections - Drain	Outlet: R3/4 (Rear)	Outlet: R3/4 (Rear)
Ice Making System	Thin ice forming inside Cylinder (Flake Ice)	Thin ice forming inside Cylinder (Nugget Ice)
Compressor	Hermetic	Hermetic
Condenser	Spiral Tube Type, Air-cooled	Spiral Tube Type, Air-cooled
Heat Rejection (AT.32°C, WT.21°C)	1840W	1840W
Evaporator	Tube coiled around Cylinder (Solder Plated)	Tube coiled around Cylinder (Solder Plated)
Refrigerant	R290	R290
Ice Making Water Control	Float Switch and Solenoid Valve	Float Switch and Solenoid Valve
Electrical Circuit Protection	Circuit Breaker, 3A Fuse (Control Circuit), Earth Wire, 5A Fuse (Microprocessor)	Circuit Breaker, 3A Fuse (Control Circuit), Earth Wire, 5A Fuse (Microprocessor)
Refrigerant Circuit Protector	Compressor Internal Thermostat (Auto-reset), Pressure Switch (Auto-reset)	Compressor Internal Thermostat (Auto-reset), Pressure Switch (Auto-reset)
Mechanism Protection	Micro Switch (Manual-reset)	Micro Switch (Manual-reset)
Interlock	Shutdown by Microprocessor (Manual-reset)	Shutdown by Microprocessor (Manual-reset)
Dimensions Product excl. Packaging	560 x 700 x 780 (W x D x H, mm)	560 x 700 x 780 (W x D x H, mm)
Dimensions Product incl. Packaging	665 x 820 x 950 (W x D x H, mm)	665 x 820 x 950 (W x D x H, mm)
Weight Gross / Net	88kg / 81kg	88kg / 81kg

Operation Conditions

Ambient Temperature	5 - 40°C
Water Supply Temperature	5 - 35°C
Water Supply Pressure	0,05-0,8MPa (0,5-8bar)
Voltage Range	Rated Voltage ±10%

Accessories

Installation Kit

For more information please contact your local sales office:

Hoshizaki Belgium: info@hoshizaki.be
 Hoshizaki Deutschland: info@hoshizaki.de
 Hoshizaki France: info@hoshizaki.fr
 Hoshizaki Iberia: info@hoshizaki.es
 Hoshizaki Middle East: sales@hoshizaki.ae

Hoshizaki Nederland: sales@hoshizaki.nl
 Hoshizaki United Kingdom: uksales@hoshizaki.co.uk
 Other countries: sales@hoshizaki.nl

www.hoshizaki-europe.com